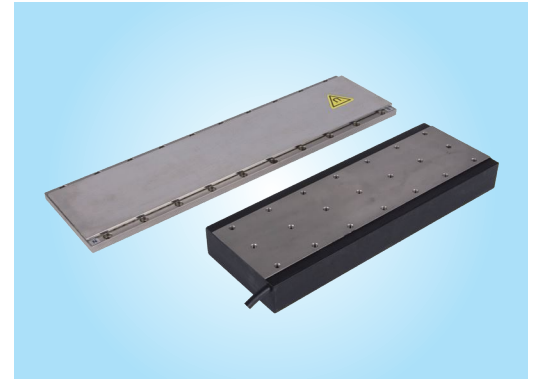


# LN Series Linear Motor

## ● General information

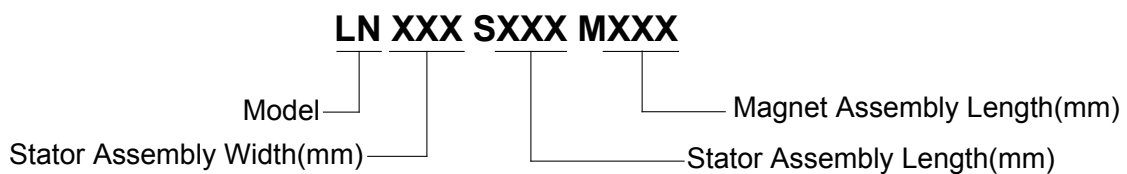
- ▶ Iron core technology
- ▶ Low cogging
- ▶ Integrated with hall sensor
- ▶ High force, reliable and long life



## ● Specification

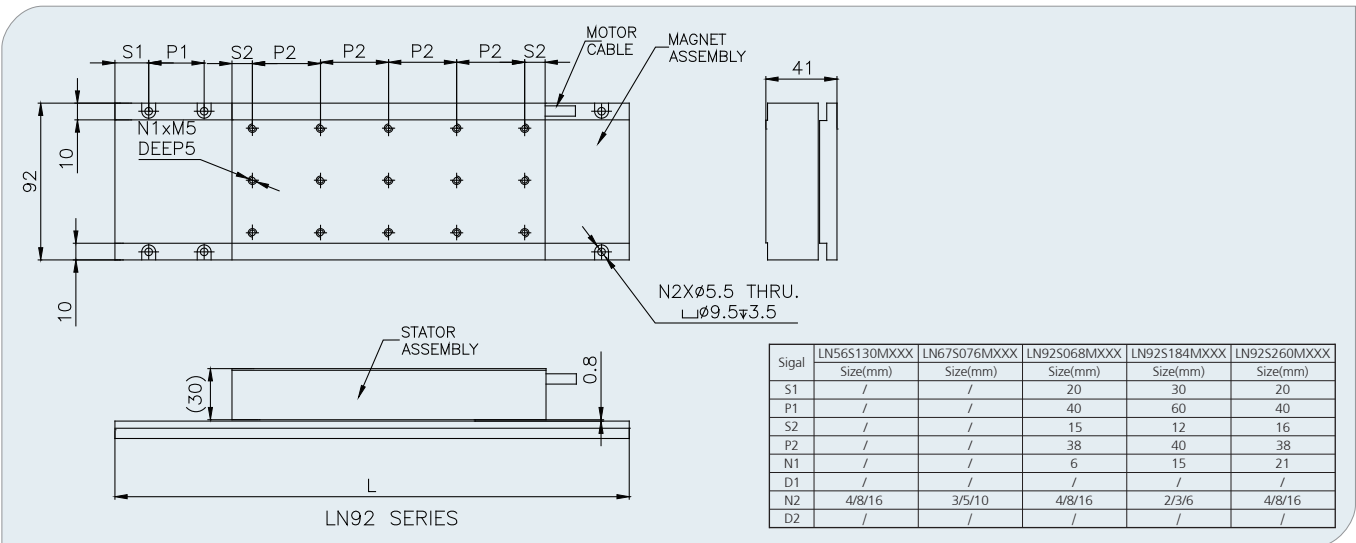
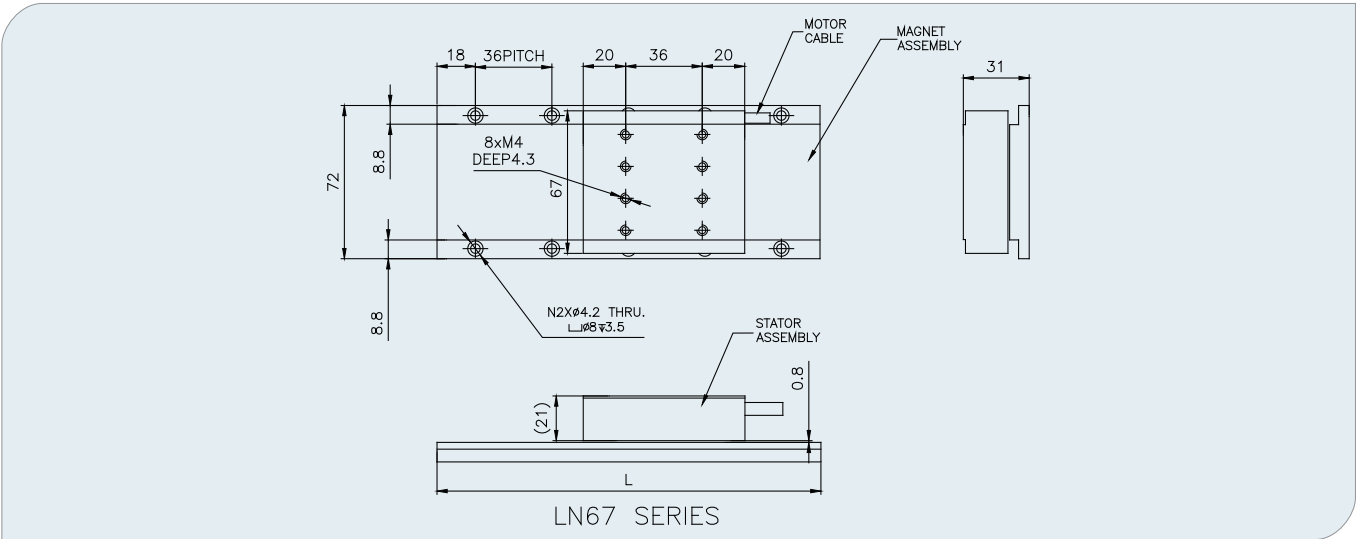
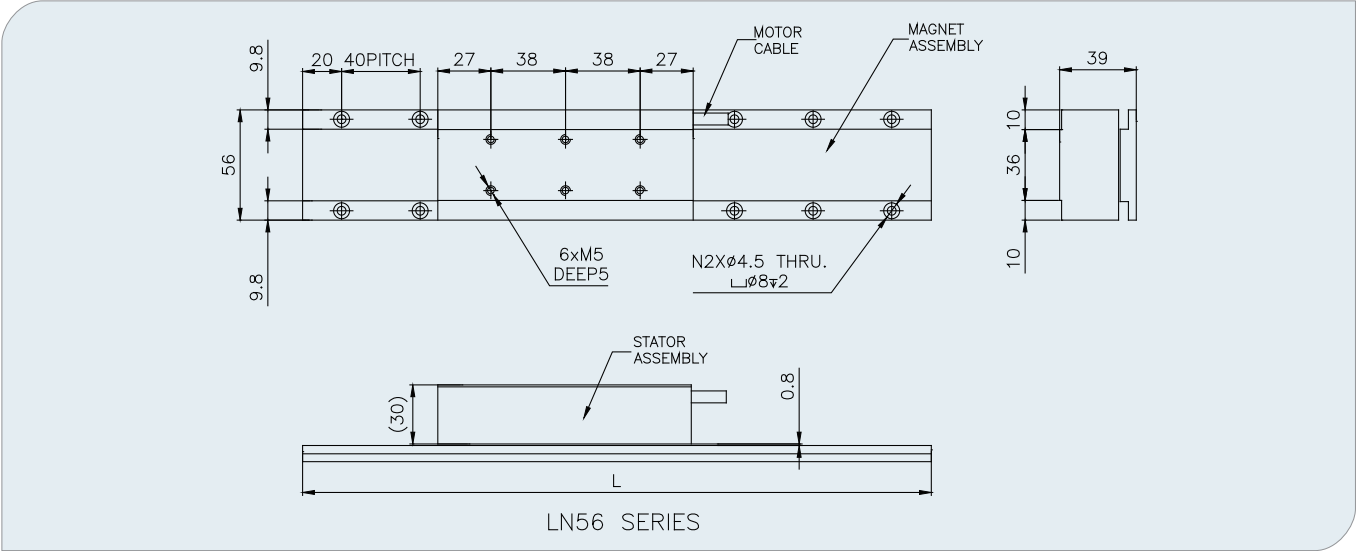
| Specification             | Unit    | LN56S130MXXX | LN67S076MXXX | LN92S068MXXX | LN92S184MXXX | LN92S260MXXX |
|---------------------------|---------|--------------|--------------|--------------|--------------|--------------|
| Peak Force                | N       | 388          | 150          | 388          | 1080         | 1555         |
| Continuous Force          | N       | 129          | 50           | 129          | 360          | 518          |
| Peak Current              | A       | 9            | 4.2          | 9            | 15           | 15           |
| Rated Current             | A       | 3            | 1.4          | 3            | 5            | 5            |
| Push Constant             | N/Arms  | 43           | 35.7         | 43           | 72           | 103.6        |
| Volatge Constant          | Vpk/m/s | 35.1         | 27.5         | 35.1         | 58.8         | 84.6         |
| Max.Speed                 | m/s     | 4            | 4            | 4            | 4            | 4            |
| Inductance(L-L)           | mH      | 10.2         | 18           | 10.2         | 20.8         | 20.4         |
| Resistance(L-L)           | Ohms    | 2.2          | 10           | 2.1          | 2.6          | 4.3          |
| Pole Distance             | mm      | 32           | 18           | 32           | 36           | 32           |
| Stator Assembly Weight    | g       | 986          | 670          | 1228         | 2110         | 3945         |
| Magnet Assembly Weight    | g/mm    | 3.39         | 4.32         | 6.7          | 6.66         | 6.79         |
| Magnet Assembly Length(L) | mm      | 80/160/320   | 108/180/360  | 80/160/320   | 90/180/360   | 80/160/320   |
| Magnet Assembly Width(W)  | mm      | 56           | 67           | 92           | 92           | 92           |
| Motor Height(H)           | mm      | 39           | 31           | 41           | 41           | 41           |

## ● Implication For Name



# LN Series Linear Motor

● *Mechanical*



| Signal | LN56S130MXXX<br>Size(mm) | LN67S076MXXX<br>Size(mm) | LN92S068MXXX<br>Size(mm) | LN92S184MXXX<br>Size(mm) | LN92S260MXXX<br>Size(mm) |
|--------|--------------------------|--------------------------|--------------------------|--------------------------|--------------------------|
| S1     | /                        | /                        | 20                       | 30                       | 20                       |
| P1     | /                        | /                        | 40                       | 60                       | 40                       |
| S2     | /                        | /                        | 15                       | 12                       | 16                       |
| P2     | /                        | /                        | 38                       | 40                       | 38                       |
| N1     | /                        | /                        | 6                        | 15                       | 21                       |
| D1     | /                        | /                        | /                        | /                        | /                        |
| N2     | 4/8/16                   | 3/5/10                   | 4/8/16                   | 2/3/6                    | 4/8/16                   |
| D2     | /                        | /                        | /                        | /                        | /                        |

# EFS Series Linear Motor



## ● General information

- ▶ Peak push force: 37.5-2160N
- ▶ Rated push force: 12.5-720N
- ▶ Maximum speed: 4m/s
- ▶ Efficient travel: 50-6000mm
- ▶ Applied to Automatic Control System, Semiconductor Industry, Medical Industry and so on.

## ● Specification

| Specification                | Unit    | ESFS05-8    | ESFS07-7   | ESFS13-4   | ESFS18-7   | ESFS26-7   |
|------------------------------|---------|-------------|------------|------------|------------|------------|
| Peak Push Force              | N       | 150         | 388        | 388        | 1080       | 1555       |
| Continuous Push Force        | N       | 50          | 129        | 129        | 360        | 518        |
| Peak Current                 | A       | 4.2         | 9          | 9          | 15         | 15         |
| Rated Current                | A       | 1.4         | 3          | 3          | 5          | 5          |
| Push Constant                | N/Arms  | 35.7        | 43         | 43         | 72         | 103.6      |
| Volatge Constant             | Vpk/m/s | 27.5        | 35.1       | 35.1       | 58.8       | 84.6       |
| Max.Speed                    | m/s     | 4           | 4          | 4          | 4          | 4          |
| Encoder Resolution           | um      | 0.1-5       | 0.1-5      | 0.1-5      | 0.1-5      | 0.1-5      |
| Inductance(L-L)              | mH      | 18          | 10.2       | 10.2       | 20.8       | 20.4       |
| Resistance(L-L)              | Ohms    | 10          | 2.1        | 2.2        | 2.6        | 4.3        |
| Pole Distance                | mm      | 18          | 32         | 32         | 36         | 32         |
| Stator Assembly Size(L1*W*H) | mm      | 76*67*21    | 68*92*30   | 130*56*30  | 184*92*30  | 260*92*30  |
| Stator Assembly Weight       | g       | 670         | 1228       | 986        | 2110       | 3945       |
| Magnet Assembly Weight       | g/mm    | 4.32        | 6.7        | 3.39       | 6.66       | 6.79       |
| Magnet Assembly Length(L)    | mm      | 108/180/360 | 80/160/320 | 80/160/320 | 90/180/360 | 80/160/320 |
| Magnet Assembly Width(W)     | mm      | 67          | 92         | 56         | 92         | 92         |
| Motor Height(H)              | mm      | 31          | 41         | 39         | 41         | 41         |

## ● Mechanical

